

DWG BY:	CATHY	CHK BY:	TOMMY
---------	-------	---------	-------

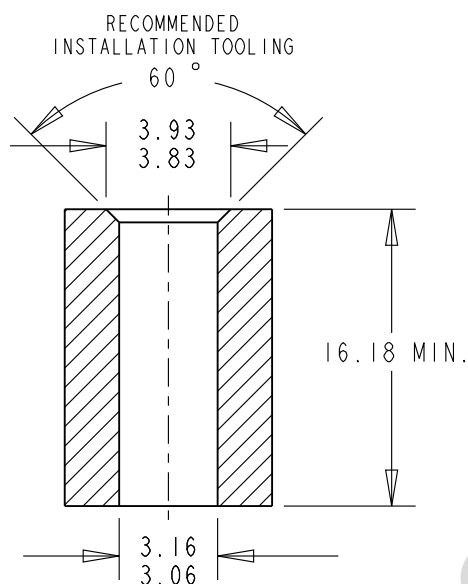
NOTES:

1- PERFORMANCE WHEN PROPERLY
INSTALLED INTO 1.5mm THICK
HRB 45-60 CRS PANEL.

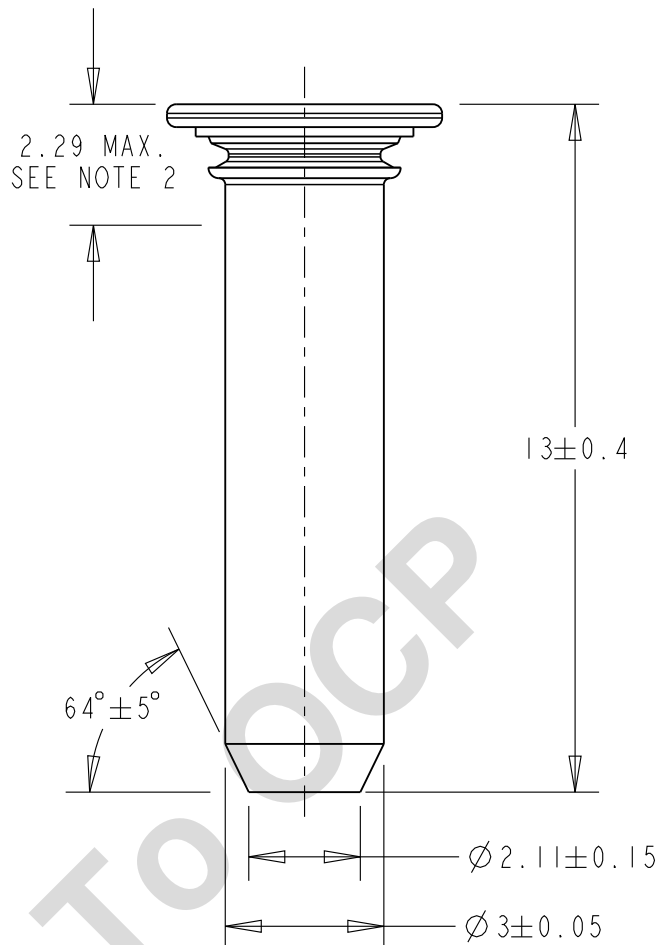
-INSTALLATION FORCE: 22 kN REF.
-PUSH-OUT: 980 N AVG.

2- PIN DIAMETER MAY EXCEED MAX IN
THIS REGION.

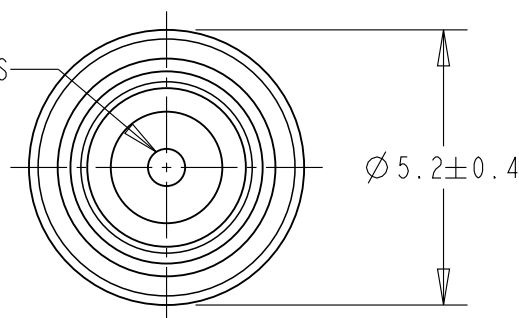
3- PART COMPLIES WITH EUROPEAN
RoHS DIRECTIVE, 2011/65/EU.



RECOMMENDED INSTALLATION ANVIL
FOR SHEETS LESS THAN 1.7 MM.
STRAIGHT HOLE FOR SHEETS 1.7 MM
AND GREATER.



MANUFACTURER'S
REGISTERED
TRADEMARK



ALL DIMENSIONS IN MILLIMETERS

SEE PEM TECHNICAL SUPPORT SECTION OF OUR WEBSITE (WWW.PEMNET.COM) FOR RELATED STANDARDS AND SPECIFICATIONS.

© 2022 PennEngineering

NOTICE: CONFIDENTIAL PROPRIETARY INFORMATION. THIS PRINT CONTAINS IDEAS, INFORMATION, AND INTELLECTUAL PROPERTY WHICH ARE THE EXCLUSIVE PROPERTY OF PENNENGINEERING. RECIPIENT MUST KEEP THE INFORMATION DISCLOSED HEREIN CONFIDENTIAL AND RECIPIENT IS EXPRESSLY PROHIBITED FROM COPYING OR PUBLICATION OF THIS PRINT EXCEPT TO OTHERS IN THEIR ORGANIZATION ON A NEED-TO-KNOW BASIS. RECIPIENT FURTHER ACKNOWLEDGES THAT THIS INFORMATION IS NOT SUBJECT TO ANY PRIOR ASSIGNMENT, LICENSE AGREEMENT, IP OWNERSHIP AGREEMENT OR INVENTION/WORK AGREEMENT WITH ANY THIRD PARTY.

X1	21-NOV-2022	PRELIM
REV	DATE	ECN #

THREAD:	N/A (NOT APPLICABLE)	MOUNTING HOLE:	3.5 ^{+0.08} ₋₀
MATERIAL:	300 SERIES STAINLESS STEEL	PANEL THICKNESS:	1 MIN.
CONDITION:	NONE	MAX. PANEL HARDNESS:	HRB 70 (HB 125)
FINISH/COLOR:	PASSIVATED AND/OR TESTED	MIN. CENTERLINE-TO-EDGE:	6.4
FINISH SPEC.:	ASTM A380		
DESCRIPTION:	SELF-CLINCHING FLUSH HEAD PIN		

MODEL PATH:	/ / /TPS-3MM-13	SCALE:	7X	DWG NO.	TPS-3MM-13	REV:	X1
-------------	-----------------	--------	----	---------	------------	------	----